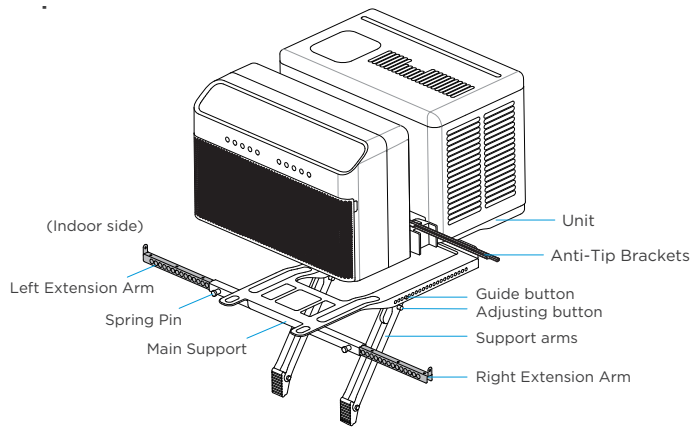


Plug & Leveling Guide

U-Shaped Smart Inverter Air Conditioner

Read these instructions completely and carefully



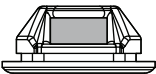

Video Guide

⚠ WARNING

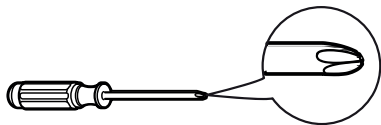
For your safety, the information in this manual must be followed to minimize the risk of personal injury. Failure to follow these instructions could allow **mold, dust, and debris to accumulate in the air conditioner and can lead to respiratory health issues.**

- We recommend that two people remove and install the U air conditioner.
- All parts supplied must be used and proper installation procedures outlined in these instruction must be followed when installing this AC.
- When handling the unit be careful to avoid cuts from sharp metal edges and aluminum fins on front and rear coils. **Wearing gloves is recommend.**
- Turn the unit off and unplug the air conditioner before cleaning.

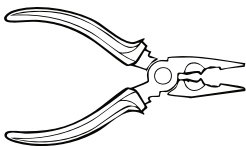
Included Hardware

Hardware	Qty.
	7
	1

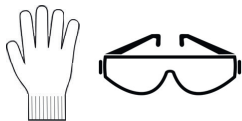
Required Tools (user provided)



Screwdriver (Phillips)



Pliers



Gloves & Proper Eye Protection

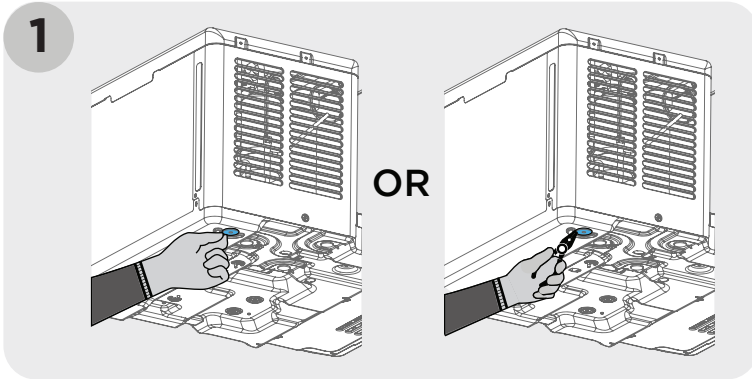
⚠ WARNING

Failure to remove and replace the blue drain plug and tilt the unit properly may not allow condensate to drain quickly enough, which could pose a mold exposure hazard.

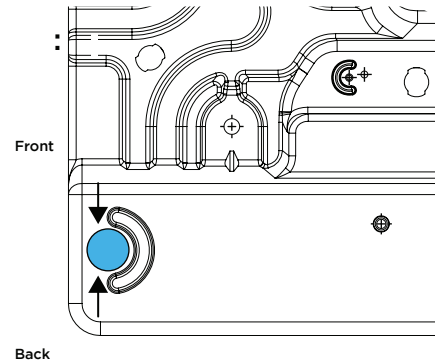


Video Guide

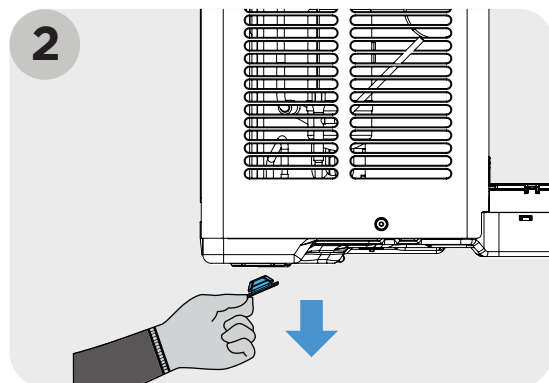
Drain Plug Replacement



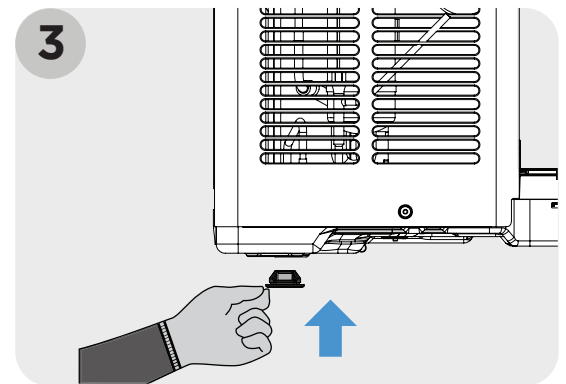
Locate drain plug on the back left corner of the outdoor portion of the unit. **Note:** Any water in the base pan will drain out when plug is removed.



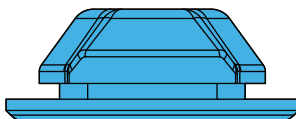
Note: Gripping the drain plug from the sides relating to the front and back of the unit may make this process easier.



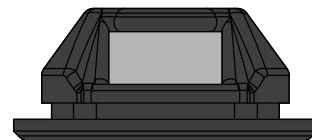
Use fingers or a pair of needle-nose pliers to remove the existing **blue** drain plug and discard.



Install new **black** drain plug. This new plug allows water to slowly drip out. Once a month check to see if water is dripping out. If plug stops dripping, replace with one of the extra drain plugs provided.



Old

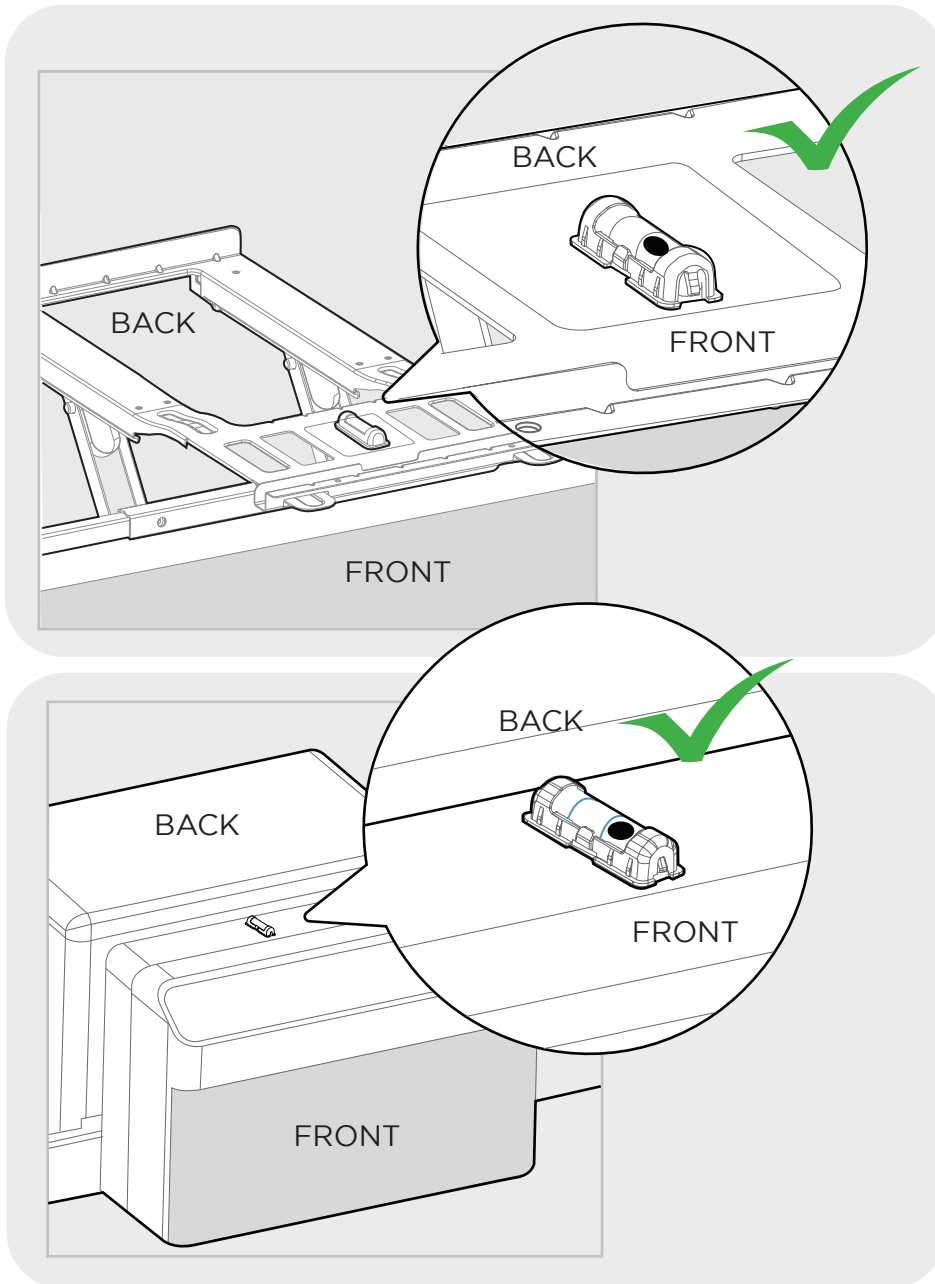


New

Level & Tilt : It is important to install the Air Conditioner at a slight downward tilt towards the back or outdoor side of the unit so that water will effectively drain from the indoor section of the unit to the outdoor section. This proper drainage of water will allow for more efficient operation of the air conditioner and effective management of condensate water.



Video Guide



- 1** To confirm the unit is leveled properly, place the bubble level on the Main Support Bracket at windowsill or on top of the Air Conditioner housing if already installed. Refer to the images above.
- 2** The bubble in the level must be touching the indicator line towards the front of the Air Conditioner for proper tilt angle. If unit tilt angle needs to be adjusted, remove the Air Conditioner and move the Angled Support Arms until the bubble is touching the indicator line towards the front of the Air Conditioner.
- 3** Refer to the user manual for complete installation instructions. Go to <https://www.midea.com/us/Support> to obtain the user manual.

⚠ WARNING Turn the unit off and unplug the air conditioner before cleaning

To prevent mold growth and dust/debris from accumulating, inspect the filter, fan, and coil every two weeks and clean as needed. Mold, dust, and debris in the air conditioner can lead to respiratory health issues.

Required Tools (user provided)



Straw Cleaning



Clean Towel



Spray Bottle



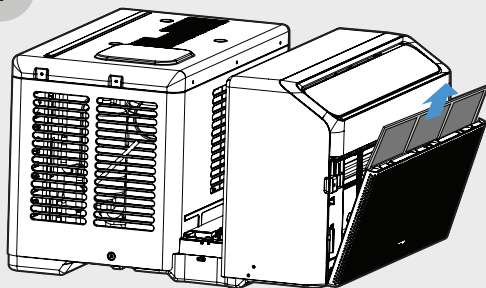
Bucket



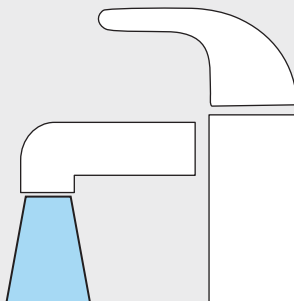
Video Guide

Filter Cleaning

1



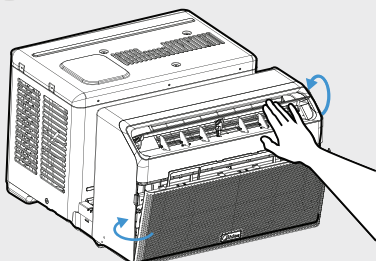
2



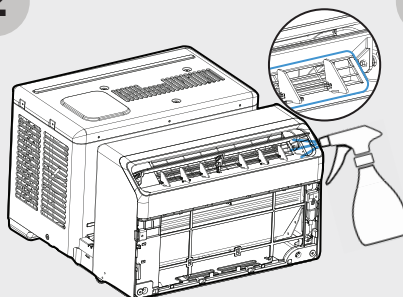
- Remove front grill and filter(s).
- Wash the filter(s) with warm water and a small amount of mild dish detergent. Rinse completely with running warm water and allow to dry completely.

Fan Cleaning

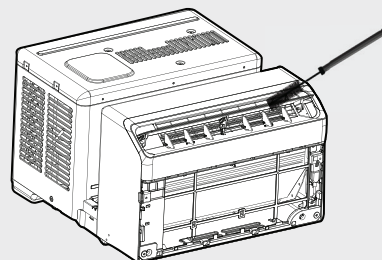
1



2

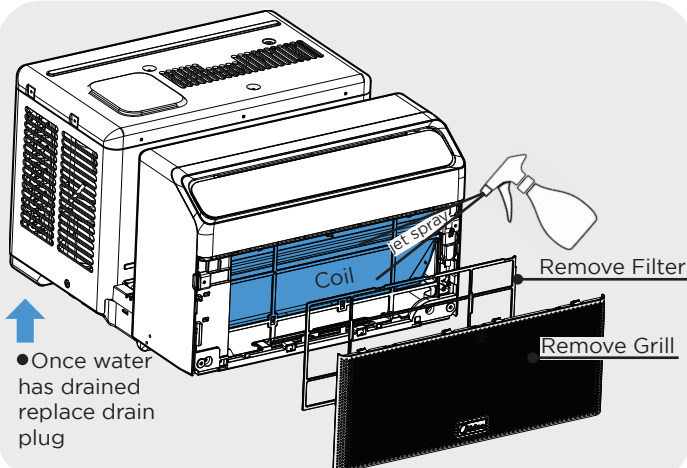


3



- Remove front grill, filter(s), and drain plug. Manually rotate the front louver to the open position.
- Spray warm water on the fan wheel and shroud to remove any accumulated debris.
- Use a brush to rotate the fan wheel and remove additional debris from the fan. Repeat water/brush steps until fan is clean.
- Reinstall front grill, filter(s), and drain plug.

Coil Cleaning



- Remove front grill, filter(s), and drain plug.
- Place a bucket under the bottom of the unit to catch any water that spills.
- Spray warm water on the evaporator coil fins to remove any accumulated debris.
- Spray the white plastic evaporator drain pan below the coil to flush.
- Use a towel to wipe up any remaining moisture on the evaporator drain pan.
- Reinstall the filter(s), front grill, and drain plug.